

BI SERIES

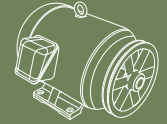


BI SERIES

Belt Drive Utility Blowers

FEATURES

- Complete range of sizes from 10" to 36".
- Full AMCA Class 1 Operation.
- Non-overloading backward inclined (BI) welded wheels.
- Aluminum wheel - (AMCA type B classification for spark resistant construction) - available as an option.
- Aluminum wheels only on BI-30 to BI-36.
- Discharge position can be field rotated to any of 8 discharge positions.
- Counter clock wise rotation is standard. Clock wise available.
- Outlet flanges on models BI-24 to BI-36.
- Temperature Ratings - without a heat slinger 250° F with a heat slinger, steel wheel 400° F, aluminum wheel 300° F.
- Motor access from 3 sides.
- Sloped motor base for ease of motor installation.
- Vented motor and drive compartment cover, with handles, for safety & weather protection.
- 16 gauge or heavier blower housing.
- Heavy duty pillow block ball bearings.



AVAILABLE WITH MOTORS & DRIVES FACTORY INSTALLED. CONSULT OUR DELAIR FAN SELECTION SOFTWARE FOR DETAILS.

PERFORMANCE SPECIFICATIONS



MOTOR AND DRIVE COMPARTMENT WITH COVER REMOVED TO ILLUSTRATE 3 SIDE MOTOR ACCESS AND SLOPED MOTOR BASE FOR BELT TENSIONING.

TYPICAL MAXIMUM CFM @ SP

MODEL	1" SP	2" SP	3" SP	4" SP	5" SP	Min HP	Max HP
BI-10	2300	2050	1700	1500	1300	1/2	2
BI-12*	3200	2950	2675	2350	1925	-	3
BI-13	3900	3625	3400	2975	2450	1/2	5
BI-15*	4775	4450	4075	3650	3000	-	5
BI-16	5700	5350	4900	4300	3500	3/4	7 1/2
BI-18	6175	5600	4925	3900	-	3/4	7 1/2
BI-20	8400	7775	7050	6200	4650	1	7 1/2
BI-22*	10000	9550	8700	7600	5550	-	10
BI-24	11100	10100	8800	6600	-	1 1/2	15
BI-27	15250	14050	12750	11150	8250	1 1/2	15
BI-30-AW	18000	17000	16000	14000	11750	2	15
BI-33-AW	22500	21000	19000	17000	14000	-	20
BI-36-AW	27000	25000	23000	20000	16000	3	25

Power rating (BHP) does not include transmission losses. Performance certified is for installation type B: Free inlet, Ducted outlet. Performance ratings do not include the effect of appurtenances (accessories). CFM values listed above are summarized for convenience.

FOR FAN CURVES & FULL PERFORMANCE DATA, CONSULT OUR DELAIR SOFTWARE. DOWNLOAD DELAIR @ WWW.CANARM.COM/DELAIR

*SPECIAL ORDER



Canarm certifies that the BI Series shown herein are licensed to bear the AMCA Seal. The ratings shown are based on tests and procedures performed in accordance with AMCA Publication 211 and comply with the requirements of the AMCA Certified Ratings Programme.

RELATED MODEL

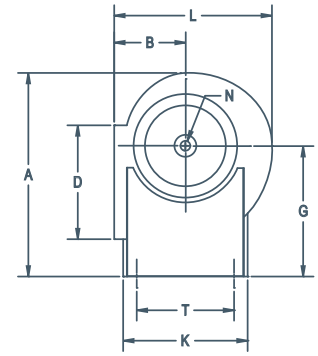
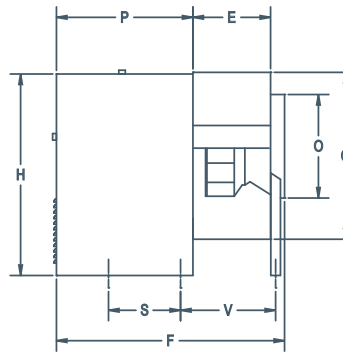
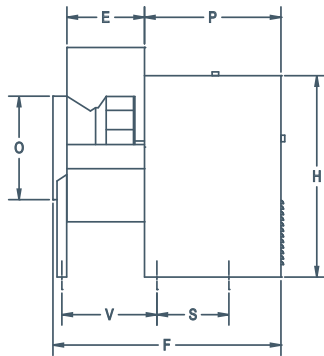
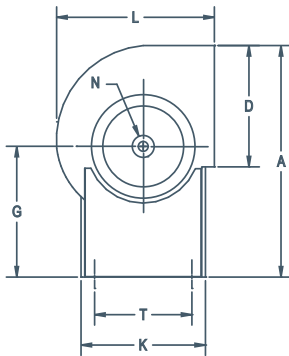
BI-RM & BI-RM-HS SERIES
Belt Drive Utility Blowers.



BI & BI-RM SERIES

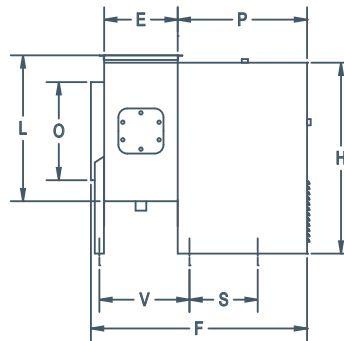
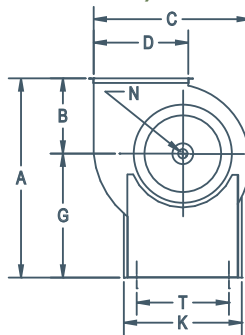
Belt Drive Utility Blowers

DIMENSIONS



MODELS BI-10 TO BI-27
(STANDARD TOP HORIZONTAL DISCHARGE)

MODELS BI-30 TO BI-36
(STANDARD BOTTOM HORIZONTAL DISCHARGE)



MODELS BI-RM(-HS)-10 TO BI-RM(-HS)-24
(UL 762 LISTED FOR REMOVAL OF COOKING VAPOURS)

MODEL	OUTLET										SHAFT DIA.	INLET					WEIGHT (lbs) without motors	
	A (STANDARD MODELS)	A (BI-RM MODELS)	B	C	D	E	F	G	H	K (CABINET WIDTH)		L	N	O	P	S		T
BI-10	26 3/4"	23 5/8"	8 3/8"	19 3/16"	11 5/16"	8 1/4"	27 3/4" No Leg	15 5/8"	21 5/16"	13 1/4"	17 1/2"	3/4"	11"	17 1/4"	11 5/8"	11 1/4"	-	78
BI-12	33 3/16"	30 3/16"	9 15/16"	27 7/16"	13 1/16"	9 7/8"	33 5/16"	20 3/16"	29 1/8"	16 3/4"	20 9/16"	1"	12 7/16"	21 3/16"	11 1/2"	14 3/4"	13 1/16"	112
BI-13	34 1/2"	30 15/16"	10 3/4"	24 1/2"	14 3/8"	10 3/4"	34 1/4"	20 3/16"	29 1/8"	16 3/4"	22 7/16"	1"	14 3/8"	21 1/4"	11 1/2"	14 3/4"	14"	134
BI-15	35 15/16"	31 15/16"	11 3/4"	27 1/4"	15 13/16"	12 3/4"	36 1/4"	20 3/16"	29 1/8"	16 3/4"	24 7/8"	1"	15 7/8"	21 3/16"	11 1/2"	14 3/4"	16"	140
BI-16	39 7/16"	34 11/16"	12 11/16"	29 15/16"	17 1/2"	13 1/8"	36 5/8"	22"	30 15/16"	16 3/4"	26 15/16"	1 3/16"	17 3/8"	21 1/4"	11 1/2"	14 3/4"	16 1/2"	162
BI-18	41 5/16"	35 7/8"	13 13/16"	33 3/16"	19 3/8"	14 1/2"	38 1/4"	22"	30 15/16"	16 3/4"	29 9/16"	1 3/16"	19 3/8"	21 1/2"	11 1/2"	14 3/4"	17 7/8"	172
BI-20	49 3/16"	42 15/16"	14 15/16"	36 7/16"	21 3/16"	15 3/4"	46 3/8"	28"	40 15/16"	25 1/8"	32 3/16"	1 3/16"	21 1/4"	27 5/8"	14 9/16"	22 3/4"	19 3/4"	289
BI-22	51 9/16"	44 3/8"	16 3/8"	40 7/16"	23 9/16"	17 3/4"	48 7/16"	28"	40 15/16"	25 1/8"	35 9/16"	1 3/16"	23 5/8"	27 5/8"	14 9/16"	22 3/4"	21 13/16"	322
BI-24	58 3/16"	49 15/16"	17 15/16"	44 11/16"	26 1/8"	19 3/8"	51 5/16"	32 1/8"	46 11/16"	28 15/16"	39 1/8"	1 7/16"	26"	28 15/16"	18 5/16"	26 3/8"	23 3/8"	385
BI-27	60 11/16"	51 1/2"	19 1/2"	49"	28 11/16"	21 1/4"	53 1/8"	32 1/8"	46 11/16"	28 15/16"	42 13/16"	1 7/16"	28 5/8"	28 7/8"	18 5/16"	26 3/8"	25 1/4"	411
BI-30	65 15/16"	68 3/16"	24 7/8"	54 1/2"	31 7/8"	23 5/8"	58 5/8"	43 5/16"	65 5/16"	44 5/16"	50 15/16"	1 11/16"	31 3/4"	32"	17"	40"	29"	517
BI-33	68 3/16"	68 5/8"	25 3/8"	58 15/16"	34 7/8"	25 15/16"	60 15/16"	43 5/16"	65 5/16"	44 5/16"	53 7/8"	1 11/16"	35"	32"	17"	40"	31 5/16"	607
BI-36	70 7/8"	69"	25 1/2"	66 3/16"	38 9/16"	28 11/16"	63 11/16"	43 5/16"	65 5/16"	44 5/16"	56 15/16"	1 15/16"	38 3/4"	32"	17"	40"	34 1/16"	747

ACCESSORIES

- V-Cap
- Bolted Clean Out Door
- Heat Slinger
- Vibration Isolators

- Shaft Seal
- Corrosion Resistant Coating
- Aluminum Wheel
- Back Draft Dampers

- Inlet & Outlet Screens
- 2" Drain Fitting

For more information on accessories, see page C14.